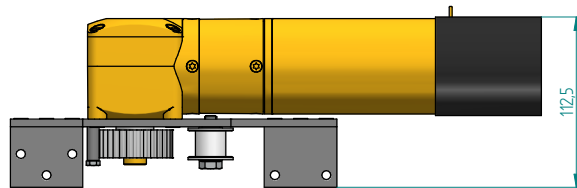
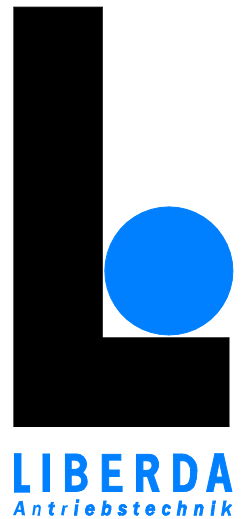
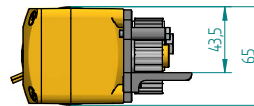
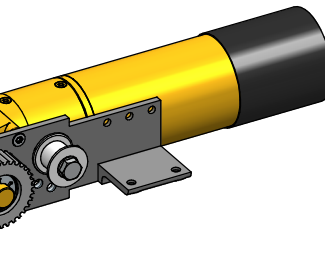
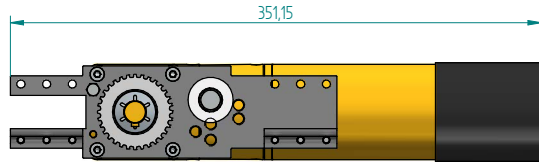


safety-compact-drive with electronic components type: SKA-AG5-2

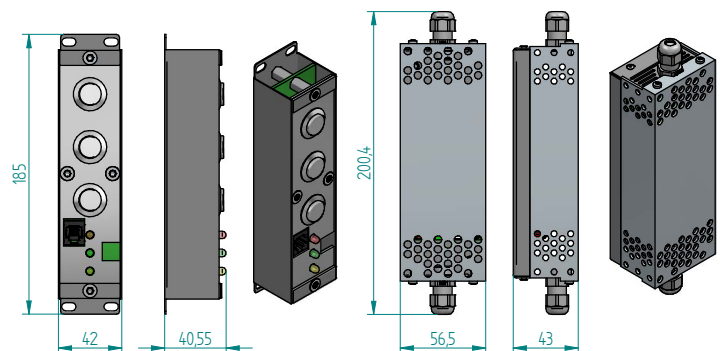
motor

scale 1:5



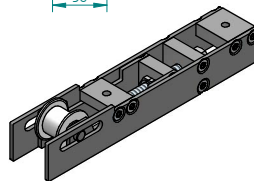
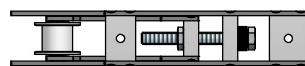
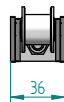
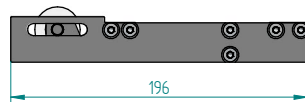
operating element & power supply

scale 1:5



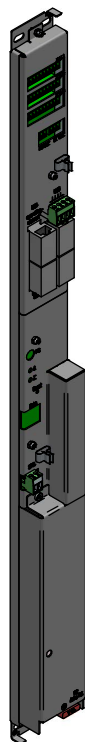
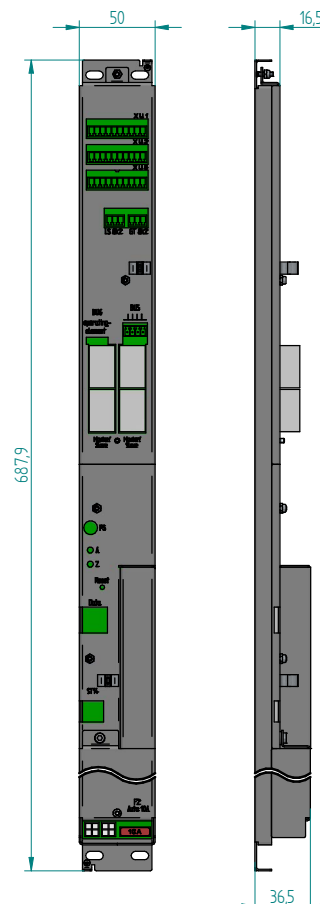
diverter pulley

scale 1:5



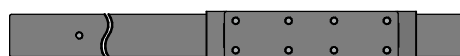
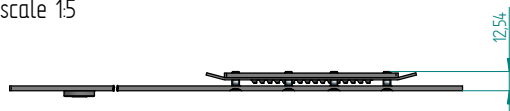
control unit

scale 1:10



toothbelt carrier

scale 1:5



technical data:

type	SKA-AG5-2
name of gearbox	EtaCrownPlus 63
motor designation	BC16355
voltage	24V
output speed	3300/min
torque	26,9Ncm
gearbox producer	Zeitlauf
reduction	i = 154
max. nominal torque	11Nm
nominal pulling force	400N
pinion	AL 19 T5/32
drive means	toothbelt ML RPP5/15, maximum load: 700N, safety factor for breaking stress > 4

The control has a sensitivity control. The door is movable by hand with > 400N
Operation in hold-to-run mode or automatic mode, low energy drive according to EN 16005.

Liberda Antriebsstechnik GmbH
A-1150 Wien
Geibelgasse 14-16
☎ +43 1 8953244
☎ +43 1 8953244 20
✉ antriebe@liberda.eu
www.liberda.eu
HG Wien FN13227k